



ONTARIO VOLKSWAGEN



Family Owned & Operated Serving The Automotive Community since 1961

Located In The Giant Ontario Auto Center

President's Day Specials!



2017
JETTA S
Lease for
\$89*/month

*\$89.00 per month plus sales tax for 36 months. Closed end lease financing available through February 28, 2017 for a new, unused 2017 Jetta 1.4T S with automatic transmission, on approved tier 1 or 2 credit by Volkswagen Credit through Ontario VW. Monthly lease payment based on MSRP of \$20,085.00, excluding title, tax, options, accessories, and dealer fees. \$4,550.00 total due at signing. Amount due at signing includes first month's payment, and acquisition fee of \$625. Monthly payments total \$5,373. Lessee responsible for insurance, maintenance and repairs. At lease end, lessee responsible for disposition fee of \$350.00, \$0.20/mile over 30,000 miles and excessive wear and tear. Purchase option at lease end for \$10,645.05, excludes taxes, title and other government fees. See Ontario Volkswagen for details or, for general product information, call 1-800-Drive-VW. (c) 2017 Volkswagen of America, Inc. All in stock with MSRP \$20,085.00, 5 to choose from.



2017
PASSAT S
Lease for
\$219*/month

*\$219.00 plus sales tax for 36 months. Closed end lease financing available through February 28, 2017 for a new, unused 2017 Passat 1.8T S with automatic transmission, on approved tier 1 or 2 credit by Volkswagen Credit through Ontario VW. Monthly lease payment based on MSRP of \$23,530.00, excluding title, tax, options, accessories, and dealer fees. \$1,000 total due at signing. Amount due at signing includes first month's payment, and acquisition fee of \$625. Monthly payments total \$7,884. Lessee responsible for insurance, maintenance and repairs. At lease end, lessee responsible for disposition fee of \$350.00, \$0.20/mile over 30,000 miles and excessive wear and tear. Purchase option at lease end for \$11,765.30, excludes taxes, title and other government fees. See Ontario Volkswagen for details or, for general product information, call 1-800-Drive-VW. (c) 2017 Volkswagen of America, Inc. All in stock with MSRP of \$23,530.00.



2017
GOLF WOLFSBURG
EDITION
Lease for
\$239*/month

*\$239.00 plus sales tax for 36 mos. Closed end lease financing available through February 28, 2017 for a new, unused 2017 Golf 1.8T Wolfsburg with automatic transmission, on approved tier 1 or 2 credit by Volkswagen Credit through Ontario VW. Monthly lease payment based on MSRP of \$23,915.00, excluding title, tax, options, accessories, and dealer fees. \$1,995 total due at signing. Amount due at signing includes first month's payment, and acquisition fee of \$625.00. Monthly payments total \$8,604. Lessee responsible for insurance, maintenance and repairs. At lease end, lessee responsible for disposition fee of \$350.00, \$0.20/mile over 30,000 miles and excessive wear and tear. Purchase option at lease end for \$14,588.15, excludes taxes, title and other government fees. See Ontario Volkswagen for details or, for general product information, call 1-800-Drive-VW. © 2017 Volkswagen of America, Inc. 4 in stock at this price, HM028467, HM023873, HM021496, HM030661



2017
GOLF ALLTRACK
Lease for
\$369*/month

*\$369.00 plus sales tax for 36 months. Closed end lease financing available through February 28, 2017 for a new, unused 2017 Golf Alltrack 1.8T SE with automatic transmission, on approved tier 1 or 2 credit by Volkswagen Credit through Ontario VW. Monthly lease payment based on MSRP of \$31,750.00, excluding title, tax, options, accessories, and dealer fees. \$1,995 total due at signing, amount due at signing includes first month's payment, and acquisition fee of \$625.00. Monthly payments total \$13,284. Lessee responsible for insurance, maintenance and repairs. At lease end, lessee responsible for disposition fee of \$350.00, \$0.20/mile over 30,000 miles and excessive wear and tear. Purchase option at lease end for \$19,050.00, excludes taxes, title and other government fees. See Ontario Volkswagen for details or, for general product information, call 1-800-Drive-VW. © 2017 Volkswagen of America, Inc. 1 only in stock at this price, HM511520

PRE-OWNED SPECIALS • EZ CREDIT TERMS



2016 NISSAN VERSA
STK # V170187A
\$10,998 ONLY 7,051 MILES



2014 VW JETTA
STK # CPW8249
(CERTIFIED)
\$11,995



2014 VW JETTA
STK # CPW8243
(CERTIFIED)
\$12,250



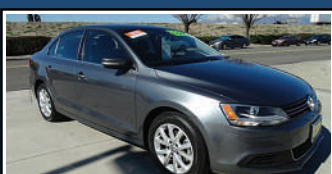
2014 HONDA CIVIC LX
STK # V170204B
\$12,970



2014 VW JETTA SE
STK # CPW8259
(CERTIFIED)
\$12,995



2013 VW JETTA SE
STK # CPW8230
(CERTIFIED)
\$12,998



2013 VW JETTA SE
STK # CPW8240
(CERTIFIED)
\$13,530



2015 JETTA SE
STK # CPW8257R
(CERTIFIED)
\$13,540



2016 HYUNDAI SONATA SE
STK # PW8258R
\$13,999



2015 VW JETTA SE
STK # CPW8241R
(CERTIFIED)
\$14,100



2015 VW PASSAT WOLFSBURG
STK # CPW8245R
(CERTIFIED)
\$14,470



2014 VW BEETLE
STK # CPW8261
(CERTIFIED)
\$14,600



2016 JETTA S W/tech
STK # CV160662S
(CERTIFIED)
\$16,450 ONLY 7,118 MILES



2016 VW JETTA SE
STK # CPW8247R
(CERTIFIED)
\$16,699



2014 VW TIGUAN SE
STK # CPW8248
(CERTIFIED)
\$18,520



2014 VW TIGUAN SE
STK # CPW8233
(CERTIFIED)
\$18,988 ONLY 9,910 MILES



2016 CHRYSLER TOWN & COUNTRY TOURING
STK # PW8244R
\$21,880



2015 JEEP WRANGLER SPORT
STK # V170068A
\$25,688



2017 VW JETTA GLI
STK # PW8262
\$27,980 ONLY 2,347 MILES



2016 VW GTI AUTOBAHN w/ performance pkg
STK # CPW8253
(CERTIFIED)
\$28,725 ONLY 10,618 MILES



ONTARIO

40 minutes from Victorville, where the 10 & 15 freeways meet
Located in the Giant Ontario Auto Center



(855) 613-6789 • ONTARIOVW.COM

701 S. KETTERING DRIVE, ONTARIO, CA 91761

All vehicles subject to prior sale. All advertised prices exclude government fees and taxes, any finance charges, dealer documentation preparation charge, any electronic filing charges. Offers valid until close of business on 2/28/17, while supplies last.